

N.E. 1/4
SECTION 33, T.6N., R.2W., S.L.B. & M.

IN WEBER COUNTY

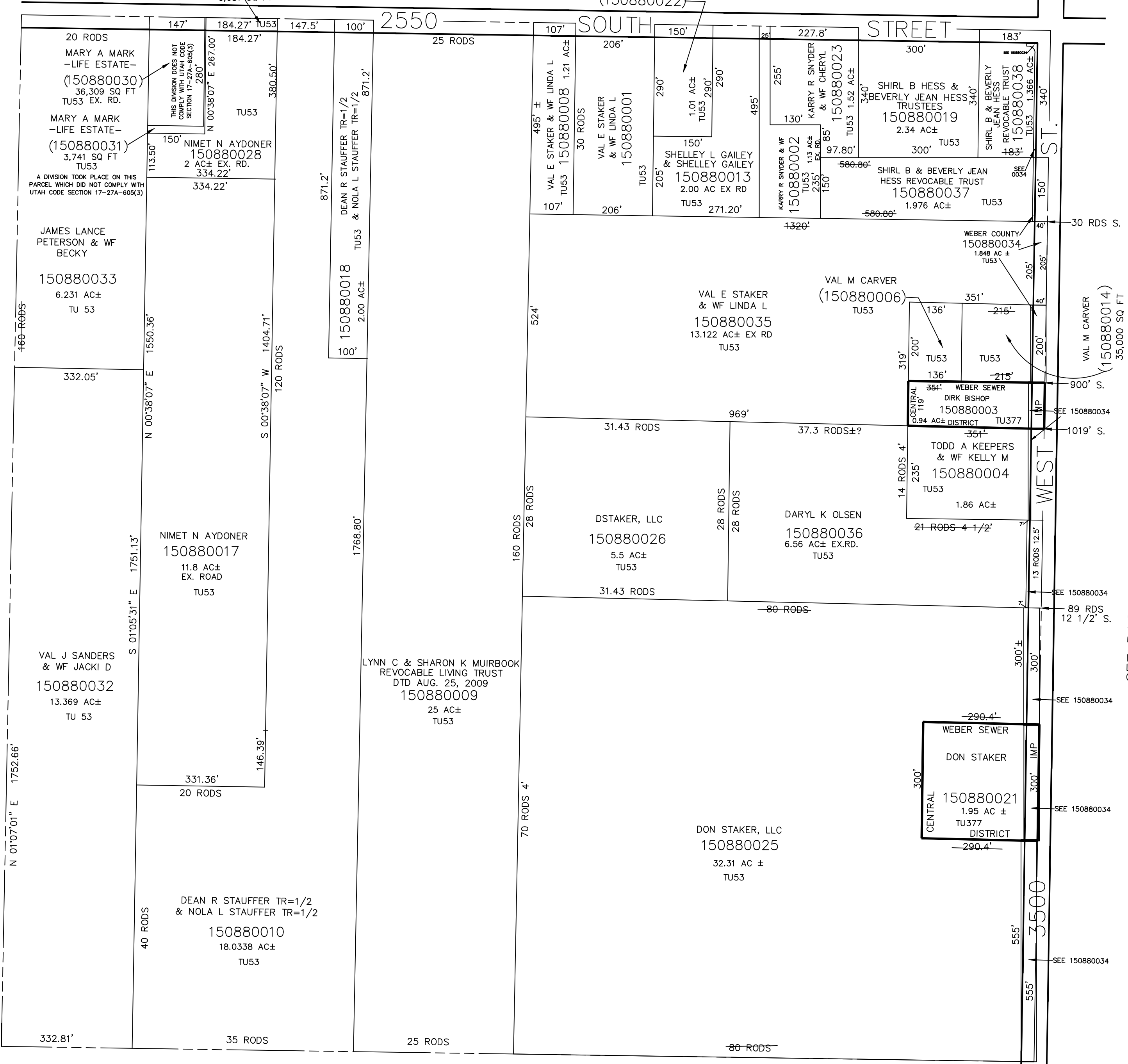
TAXING UNIT: 53,377

SCALE 1" = 200'

(WEBER COUNTY)
150880027
6,081 SQ FT

SEE PAGE 78-2

JAVIER LOPEZ
& WF MARIA V
(150880022)



SEE PAGE 91

SEE PAGE 91

SEE PAGE 90

SEE PAGE 92

SEE PAGE 87